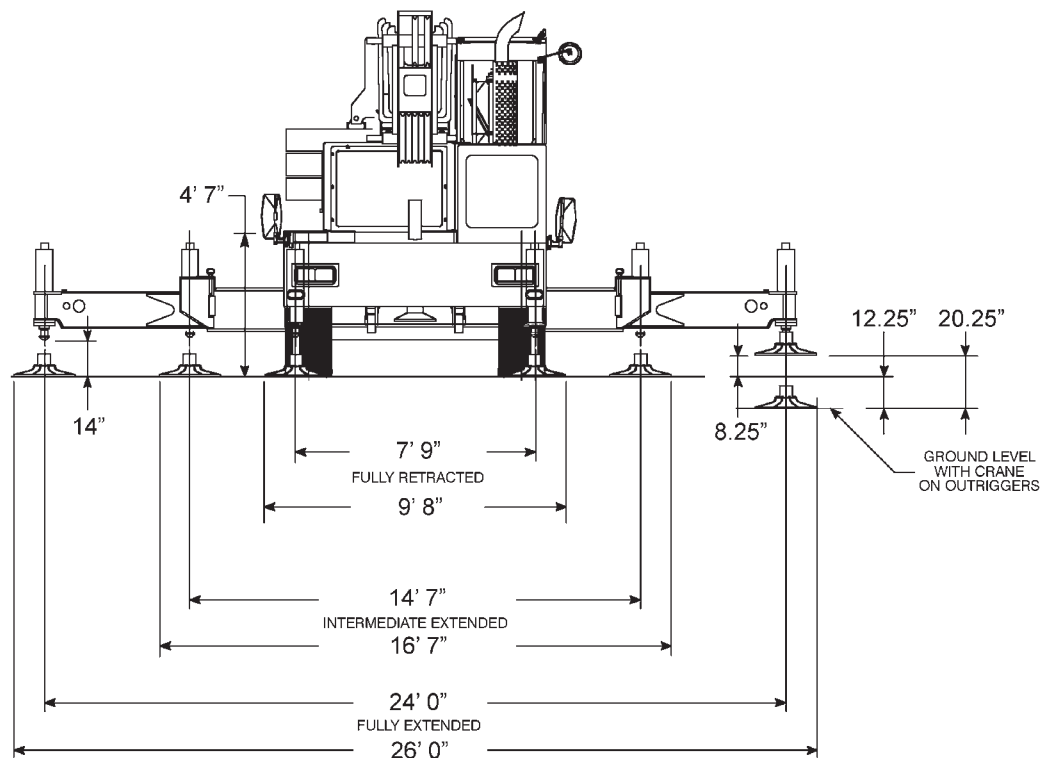
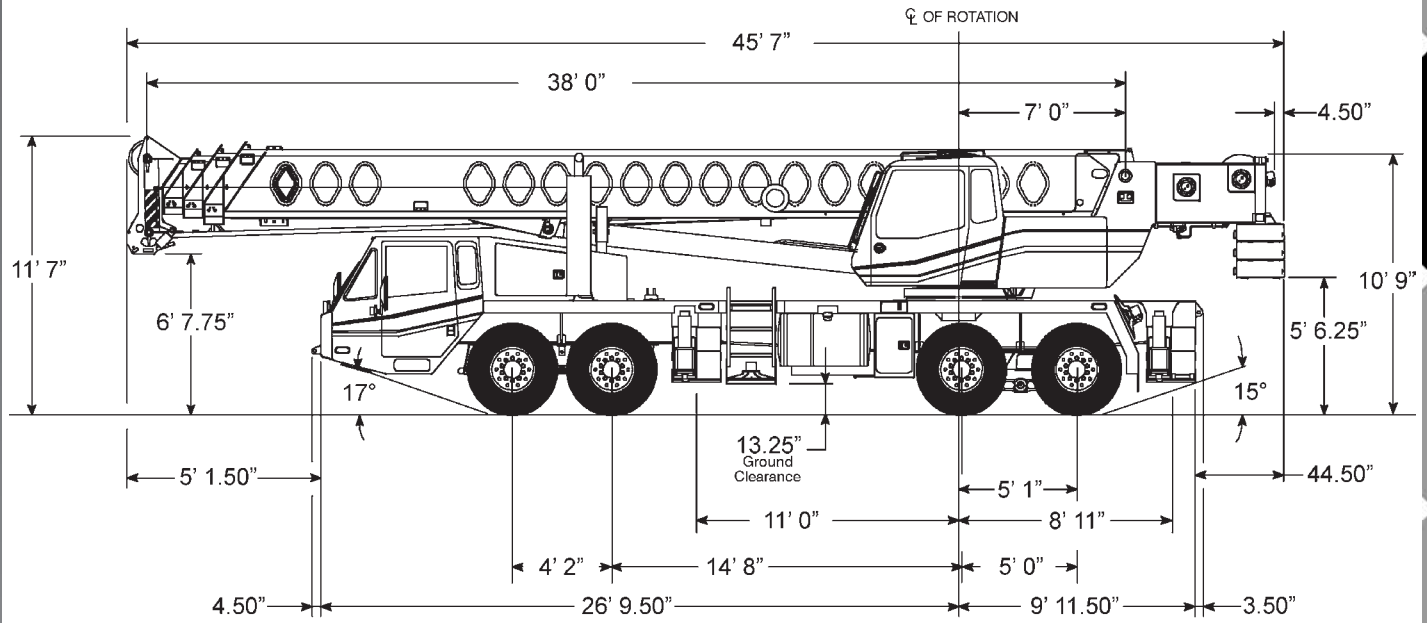


# 75 t Hydraulic Truck Crane



All information given are for reference only.

General Information

Hydraulic Truck Cranes

Crawler Cranes

Carry Decks

Rough Terrain Cranes

Rigging Equipment

Aerial Lifts

Transportation

# 75 t Hydraulic Truck Crane

## LINK BELT HTC 8675



General Information

Hydraulic Truck Cranes

Crawler Cranes

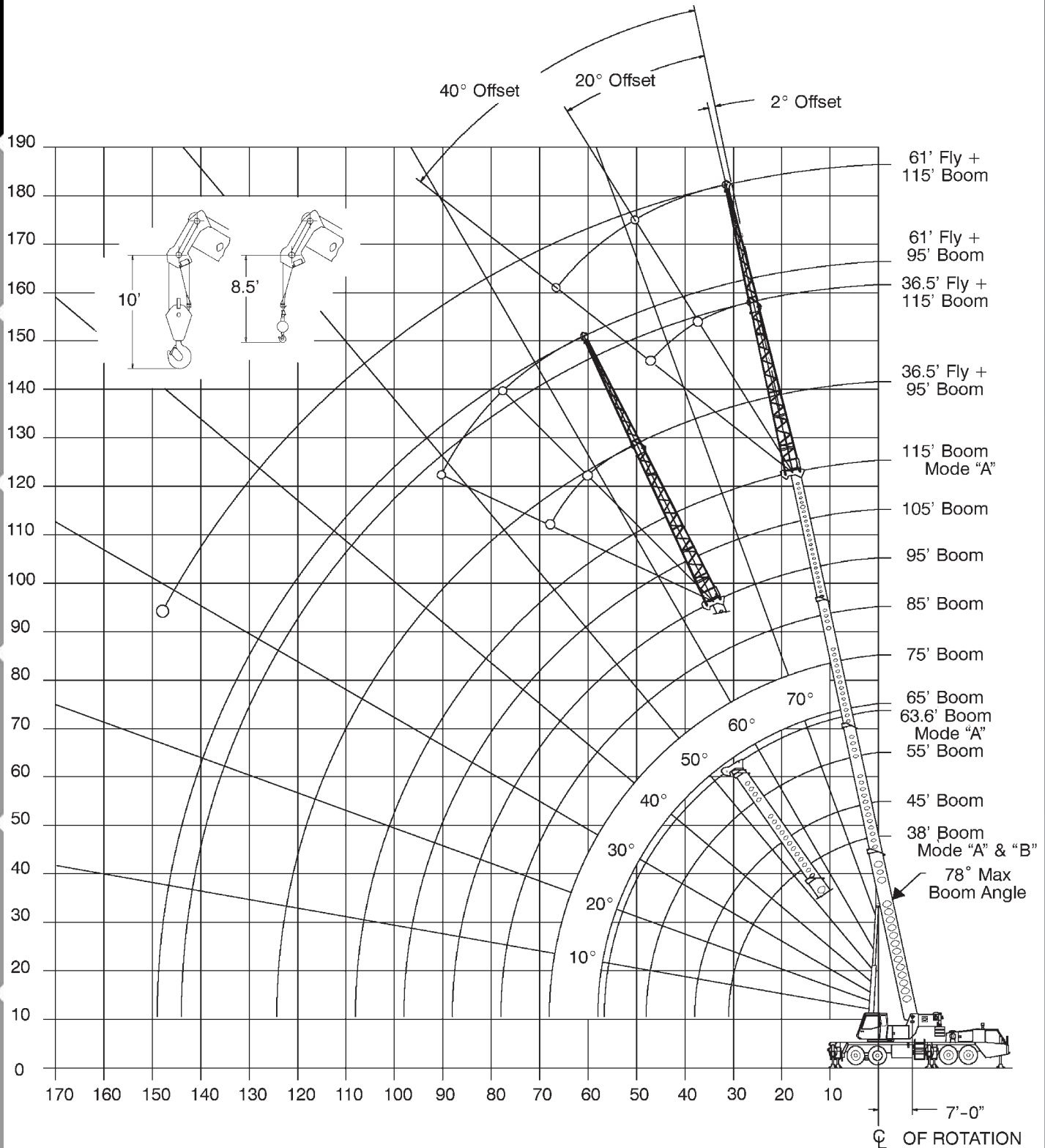
Carry Decks

Rough Terrain Cranes

Rigging Equipment

Aerial Lifts

Transportation



All information given are for reference only.

  
 38-115 ft

  
 16,000 lbs

  
 19'11" x 24'

  
 360°

**85**  
 85%

General Information

Hydraulic Truck Cranes

Crawler Cranes

Carry Decks

Rough Terrain Cranes

Rigging Equipment

Aerial Lifts

Transportation

ft	38	45	55	65	75	85	95	105	115	ft
8	150									8
9	140									9
10	132	87.4	85.6							10
12	116.9	87.4	85.6	56.3*						12
15	100.2	87.4	85.6	56.3*	42	42				15
20	75.9	75.5	75	53*	42	42	38.6			20
25	58.7	58.3	57.9	44.9*	42	41.8	33.8	30.3	24.5	25
30	45.4	45.1	44.4	42	42	36.9	29.8	27	24.5	30
35		35.6	36.3	36.6	36.8	32.9	26.6	24.1	22.2	35
40			29.1	29.4	29.6	29.7	23.9	21.7	20	40
45			23.8	24.3	24.5	24.6	21.7	19.6	18.1	45
50				20.3	20.6	20.7	19.8	17.9	16.3	50
55				17.2	17.5	17.6	17.7	16.2	14.9	55
60					15	15.1	15.2	14.9	13.6	60
65					12.9	13.1	13.2	13.3	12.5	65
70						11.4	11.6	11.6	11.6	70
75						9.9	10.1	10.2	10.3	75
80							8.8	8.9	9	80
85							7.7	7.8	7.8	85
90								6.8	6.9	90
95								5.9	6	95
100									5.2	100
105									4.6	105

\*63.6 ft max. Mode "A"

All information given are for reference only.

# 75 t Hydraulic Truck Crane

LINK BELT HTC 8675



38-115 ft



12,000 lbs



19'11"x24'



360°

**85**

85%

ft	38	45	55	65	75	85	95	105	115	ft
8	150									8
9	140									9
10	132	87.4	85.6							10
12	114.6	87.4	85.6	56.3*						12
15	98.2	87.4	85.6	56.3*	42	42				15
20	73.6	73.2	72.7	53*	42	42	38.6			20
25	56.7	56.3	55.9	44.9*	42	41.8	33.8	30.3	24.5	25
30	41.9	41.6	40.9	42	42	36.9	29.8	27	24.5	30
35		31.7	31.3	33.8	34	32.9	26.6	24.1	22.2	35
40			24.7	27.1	27.3	27.4	23.9	21.7	20	40
45			19.8	22.2	22.5	22.6	21.7	19.6	18.1	45
50				18.5	18.8	18.9	19	17.9	16.3	50
55				15.6	15.9	16	16.1	16.2	14.9	55
60					13.5	13.7	13.8	13.9	13.6	60
65					11.6	11.8	11.9	12	12	65
70						10.1	10.2	10.3	10.4	70
75						8.7	8.8	8.9	9	75
80							7.6	7.7	7.8	80
85							6.5	6.6	6.7	85
90								5.7	5.8	90
95								4.9	5	95
100									4.3	100
105									3.7	105

\*63.6 ft max.Mode "A"

General Information

Hydraulic Truck Cranes

Crawler Cranes

Carry Decks

Rough Terrain Cranes

Rigging Equipment

Aerial Lifts

Transportation

All information given are for reference only.



115 ft



36.5/61 ft



16,000 lbs



19'11"x24'



360°

**85**

85%

General Information

Hydraulic Truck Cranes

Crawler Cranes

Carry Decks

Rough Terrain Cranes

Rigging Equipment

Aerial Lifts

Transportation

All information given are for reference only.

ft	2°	36.5 20°	40°	2°	61 20°	30°	ft
35	10.5						35
40	10.5			7.1			40
45	10.5	9.2		7.1			45
50	10.5	8.9		7.1			50
55	10.5	8.6	6.8	7			55
60	10.5	8.2	6.6	6.7	4.9		60
65	10.2	8	6.5	6.4	4.7		65
70	9.5	7.7	6.3	6.2	4.5		70
75	8.7	7.4	6.2	5.9	4.3		75
80	8	7.2	6.1	5.6	4.2	3.3	80
85	7.4	7	6	5.3	4	3.2	85
90	6.9	6.8	5.9	5.1	3.9	3.1	90
95	6.4	6.5	5.8	4.8	3.7	3	95
100	5.9	6.1	5.7	4.6	3.6	3	100
105	5.5	5.6	5.7	4.4	3.5	2.9	105
110	4.9	5.2	5.4	4.2	3.4	2.9	110
115	4.3	4.7	4.9	4	3.3	2.8	115
120	3.8	4.1	4.3	3.8	3.2	2.8	120
125	3.3	3.6		3.4	3.1	2.8	125
130	2.9	3.1		3.1	3	2.7	130
135	2.5	2.7		2.9	2.9	2.7	135
140	2.2	2.3		2.6	2.8	2.7	140
145				2.3	2.5	2.7	145
150				2	2.3		150
155				1.7	2		155
160				1.4	1.6		160

# 75 t Hydraulic Truck Crane

LINK BELT HTC 8675



General Information



115 ft



36.5/61 ft



12,000 lbs



19'11"x24'



360°

**85**

85%

Hydraulic Truck Cranes

Crawler Cranes

Carry Decks

Rough Terrain Cranes

Rigging Equipment

Aerial Lifts

Transportation

ft	2°	36.5 20°	40°	2°	61 20°	40°	ft
35	10.5						35
40	10.5			7.1			40
45	10.5	9.2		7.1			45
50	10.5	8.9		7.1			50
55	10.5	8.6	6.8	7			55
60	10.5	8.2	6.6	6.7	4.9		60
65	10.2	8	6.5	6.4	4.7		65
70	9.5	7.7	6.3	6.2	4.5		70
75	8.7	7.4	6.2	5.9	4.3		75
80	8	7.2	6.1	5.6	4.2	3.3	80
85	7.4	7	6	5.3	4	3.2	85
90	6.8	6.8	5.9	5.1	3.9	3.1	90
95	6	6.5	5.8	4.8	3.7	3	95
100	5.2	5.8	5.7	4.6	3.6	3	100
105	4.6	5.1	5.4	4.4	3.5	2.9	105
110	4	4.5	4.7	4.2	3.4	2.9	110
115	3.5	3.9	4.1	4	3.3	2.8	115
120	3	3.4	3.5	3.5	3.2	2.8	120
125	2.6	2.9		3.1	3.1	2.8	125
130	2.2	2.4		2.7	3	2.7	130
135	1.9	2		2.3	2.8	2.7	135
140		1.6		2	2.4	2.7	140
145				1.7	2.1	2.3	145
150				1.4	1.7		150
155					1.4		155

All information given are for reference only.